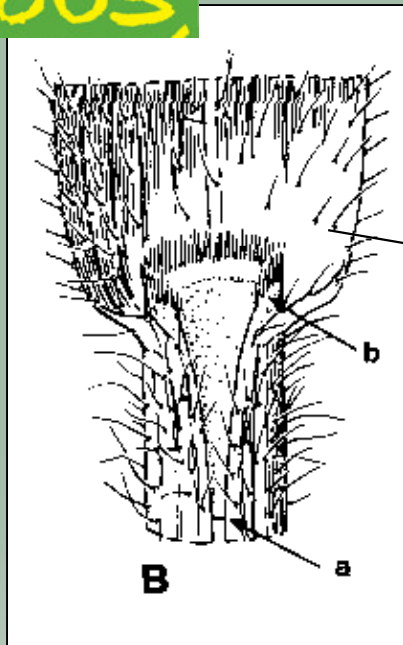
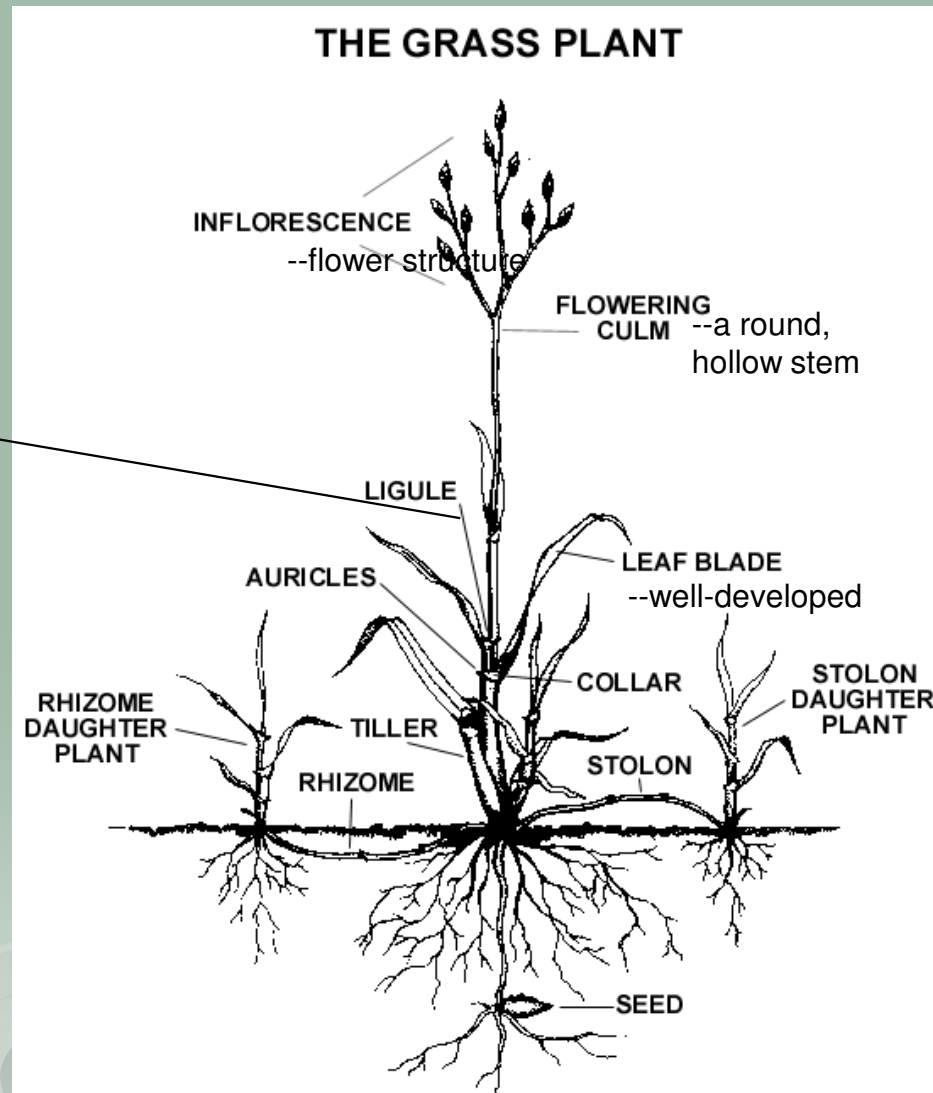


Grass Morphology

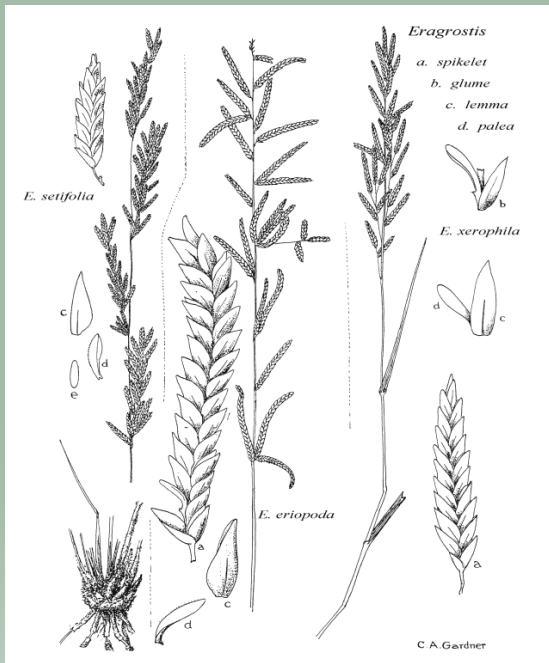
HERBACEOUS



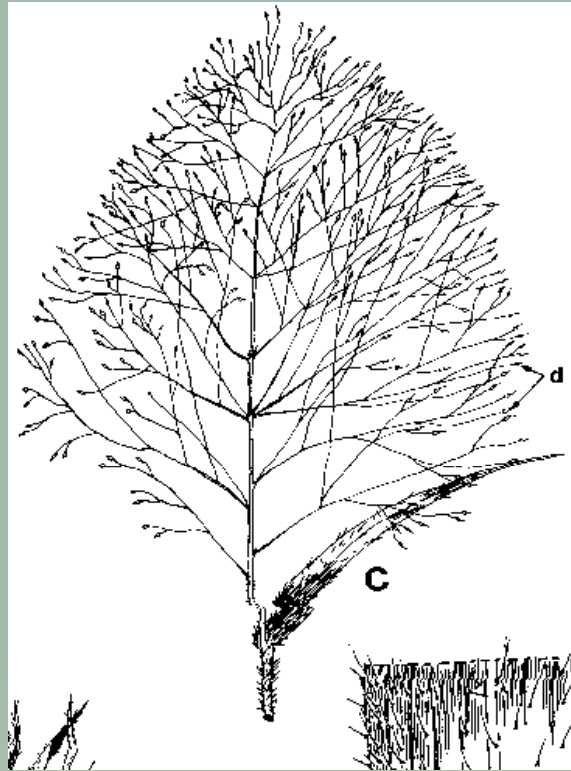
Collar region—with blade, sheath, and ligule



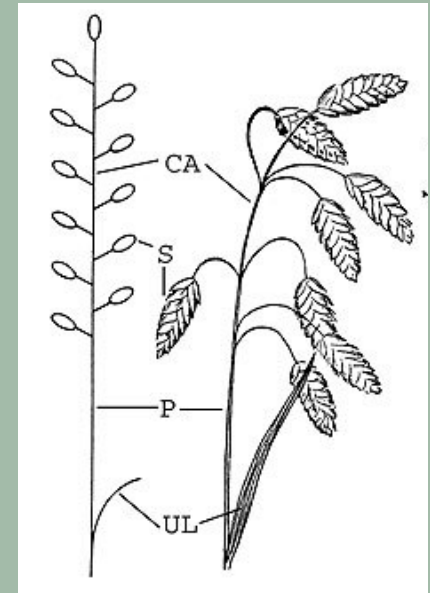
Grass Morphology



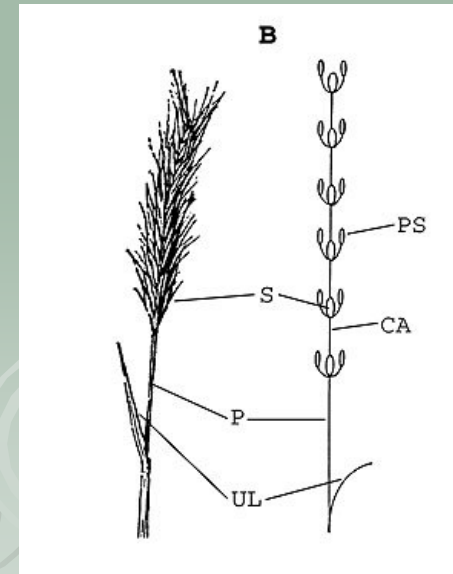
Spikes—alternating spikelets on an unbranched inflorescence



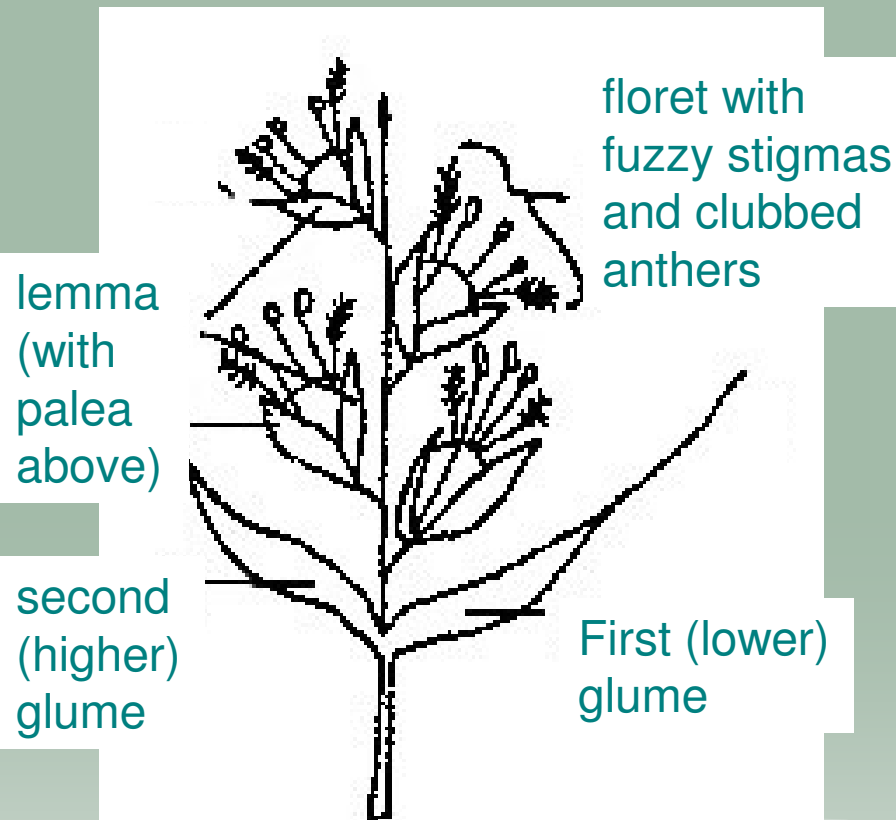
Panicles—branched inflorescence with any number of spikelets



Racemes—spikelets on branched pedicels



Grass Morphology



Grass spikelet with 2 glumes and 4 florets

spikelet with 4 florets
(flowers)

- each spikelet made of (2) glumes
- each floret borne within 2 additional (smaller) bracts: lemma & palea
- Glumes or lemmas may have projection called “awn”
- each fertile floret produces a single seed



hairy lemmas with awns