



Easter daisy; Sunflower family



Mountain sand lily; Lily family. In mid-summer, the plant goes underground and is dormant.



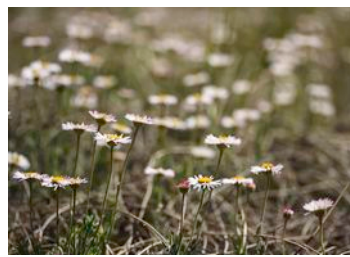
Salt-and-Pepper; Parsley family. Blooms early in spring. Has red anthers.



Mouse-ear Chickweed; Chickweed family. Has notched petals.



Fleabane; Sunflower family.



Fleabane; Sunflower family.



White locoweed; Pea family



Miner's Candle; Borage family. The flowers spiral around the stalk from the base to the top.



Small-leaf Pussytoes; Sunflower family



Small-leaf Pussytoes; Sunflower family



Canada violet; Violet family



Yucca; Agave family. Fruits, seeds, flowers and stems are edible. Leaves can be used for hanging things. Sometimes can make soap from roots. Not the same as "yuca" or cassava.



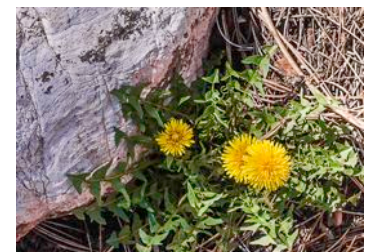
Nuttall's Violet; Violet family. Insects attracted by bright petals; land on bottom petal and follow stripes into the center of the flower. Pollen grains fall on back. Large insects can't enter. Also has flowers on lower stem that are fertile but don't bloom; adaptation to early season.



Small-flowered Alyssum; Mustard family. Grows in disturbed areas. Introduced, not native.



Small-flowered Alyssum; Mustard family.



Common dandelion (Taraxacum officinale) Sunflower family. Introduced in the US in the mid-1600s for food and medicine



Wavyleaf or false dandelion;
Sunflower family. Native.



Whiskbroom parsley; Parsley family



Western Wallflower; Mustard family



Yellow salsify; Sunflower family



Oregon grape; Barberry family. Fruits
tart but edible; inner bark of stems and
roots used for yellow dye; berries
used for purple dye.



Fineleaf woollywhite; Sunflower
Family



Fineleaf woollywhite; Sunflower
Family



Common mullein, first year; Figwort
family



Common mullein, second year;
Figwort family



Pasque flower; Buttercup family. Very
early season flower. Hairs protect it
from wind.



Pasque flower seed heads, similar to
a dandelion. Dispersed by wind.



Foothills mertensia; Borage family.
Flowers turn pink after pollination.



Wild Blue Flax; Flax family. Each
flower lasts only one day.



Britton's Skullcap; Mint family



Field Milkvetch; Pea family



Foothills Milkvetch; Pea family



Foothills Milkvetch; Pea family



Short's milkvetch; Pea family



Lambert's Locoweed; Pea family



Lambert's Locoweed; Pea family



One-sided Penstemon; Figwort family



Redstem filaree or Stork's bill; Geranium family. This is a List B noxious weed.



Shrub: Threeleaf sumac; Sumac Family



Shrub: Wax Currant; Gooseberry family



Pricklypear Cactus (*Opuntia polyacantha*) Cactus family



Bigroot Pricklypear Cactus (*Opuntia macrorhiza*) Cactus family



Prickly pear cactus with white fluffy wax produced by cochineal insects. If rubbed between the fingers, the white wax turns carmine red from the dye in the insects.



Missouri pincushion cactus; Cactus family